



LUMAR E

VILAMOURA • ALGARVE



LUMARE
VILAMOURA • ALGARVE

LIVE WITH DISTINCTION



CONCEPT



LOCATION



DEVELOPMENT

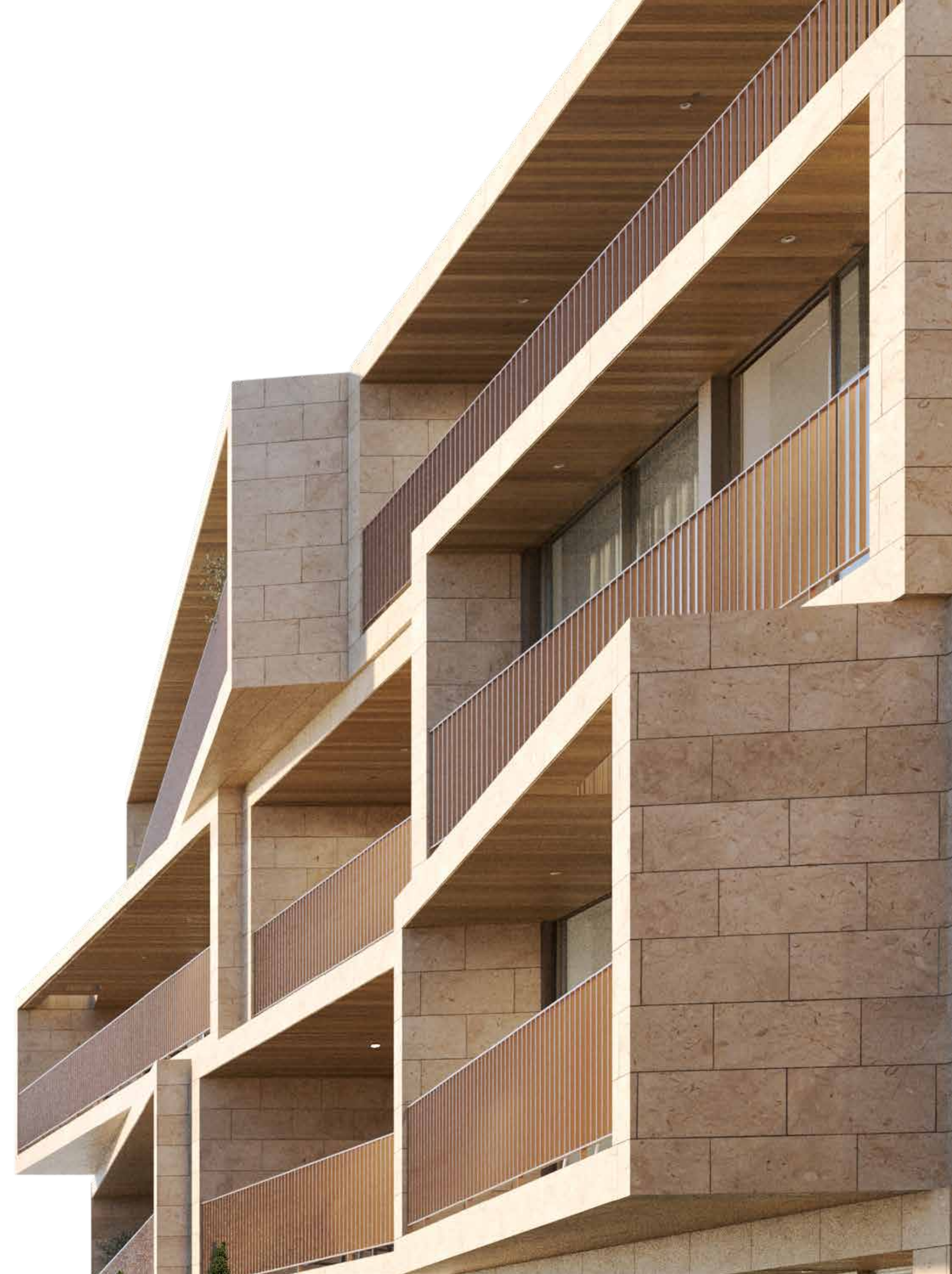


FINISHINGS



DEVELOPER

LIVE WITH DISTINCTION





CONCEPT



LIVE WITH DISTINCTION

Lumare was designed to incorporate all the luxuries of seaside living. Created with a deep appreciation for the coastal environment, the architectural narrative develops with an intentional integration of natural light. Here, glass facades harmoniously unite the elegant interiors with the stunning exterior panorama. The sea takes on a central role, shaping not only the landscape but also the concept of this coastal retreat.

ILLUMINATE

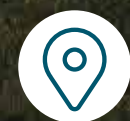
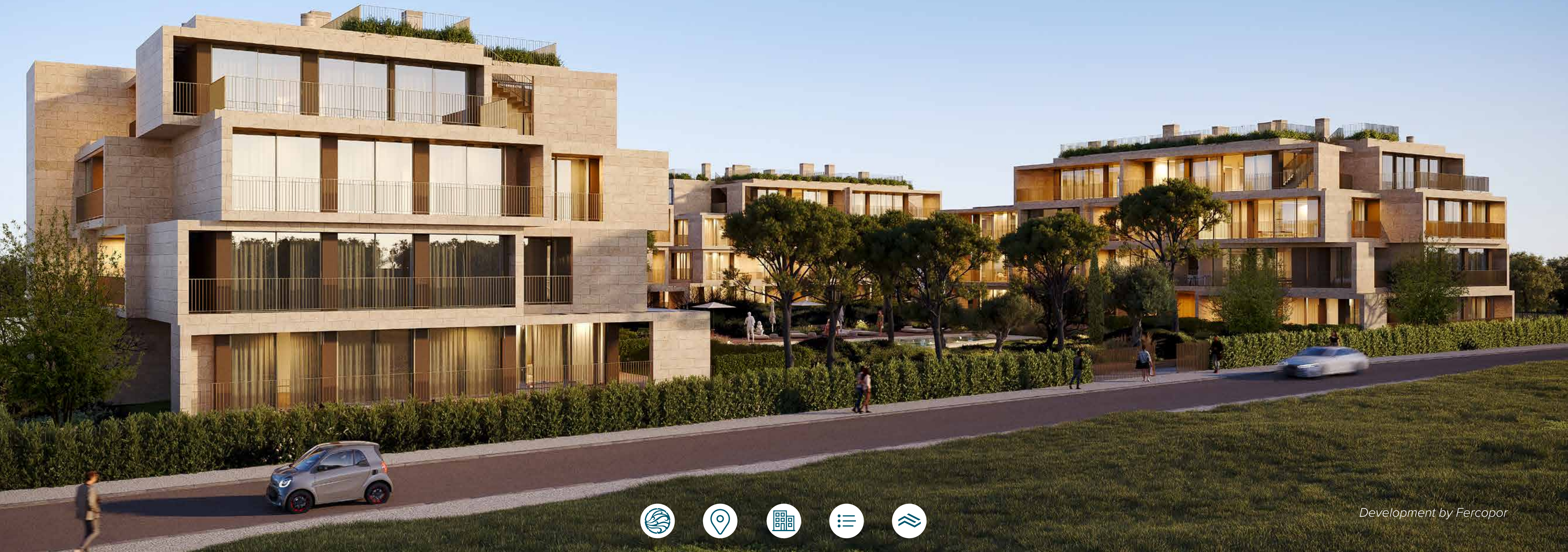
The development is characterized by its brightness, promising a space filled with natural light, where the radiance illuminates every corner, and where natural materials bring you closer to nature.

Lumare incorporates innovation with a design that exudes sophistication and elegance.





FEEL THE WARM SUN AND SEA BREEZE

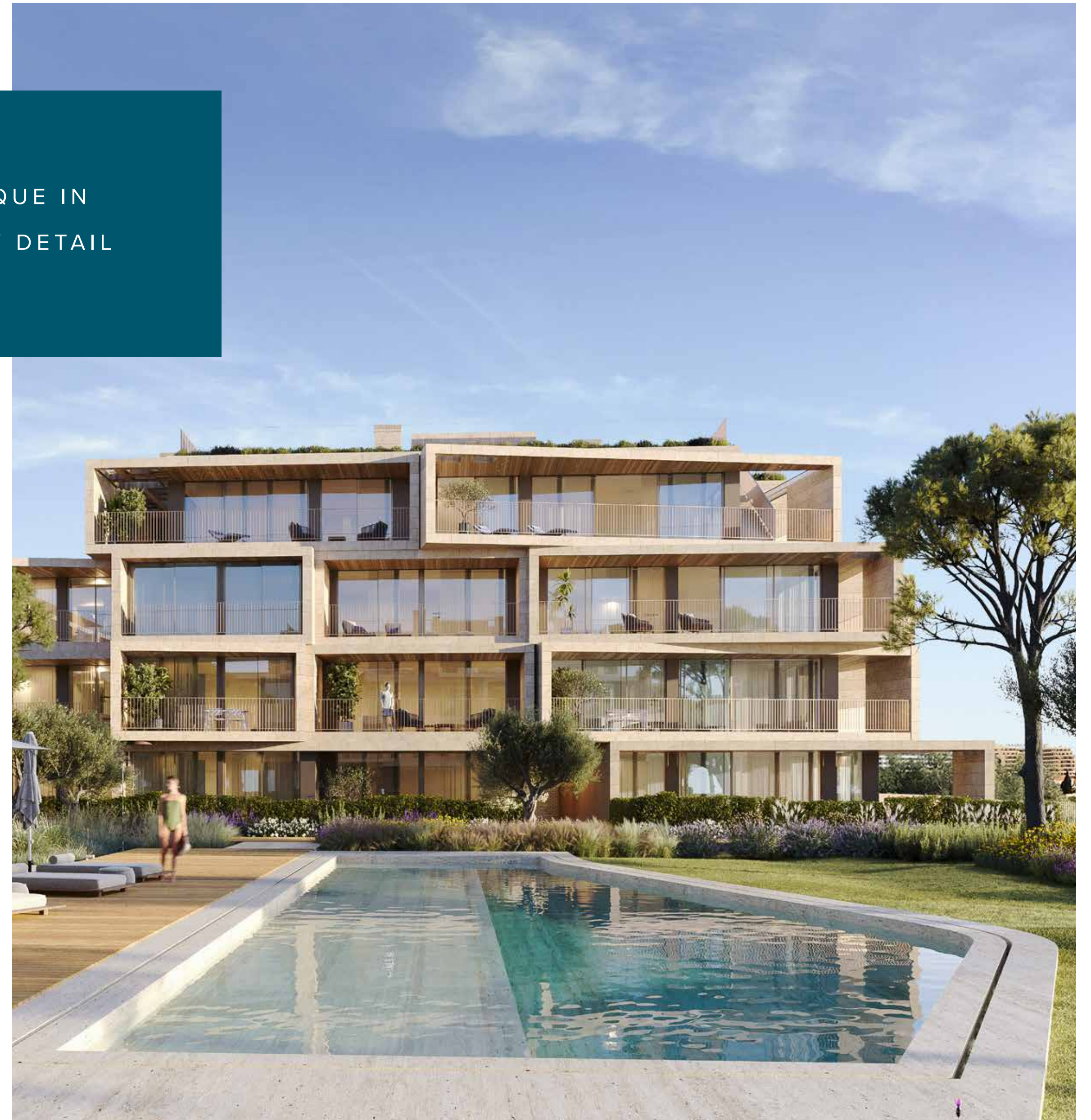


Development by Fercopor

THE NEW DEFINITION OF LUXURY

Discover the new definition of luxury, as light and sea converge in harmony near a serene nature reserve. Lumare is defined by the finest quality materials and the high-end amenities, bringing an unparalleled level of distinction to the development. Immerse yourself in a lifestyle where every detail is meticulously crafted to enhance your living experience.

UNIQUE IN
EVERY DETAIL















LOCATION

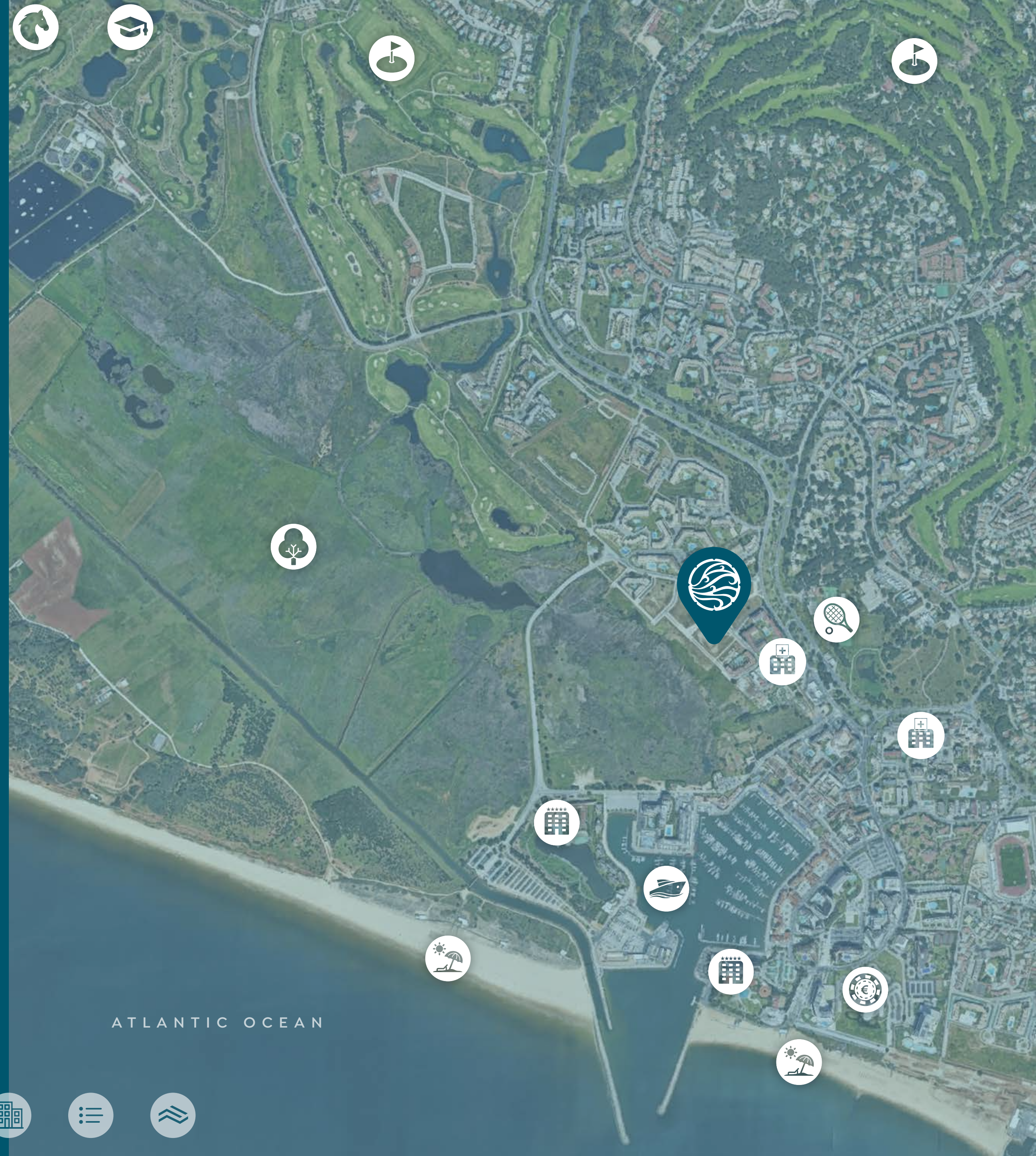


VILAMOURA

A LOCATION OF EXCELLENCE

Vilamoura is a prestigious destination, renowned for its refinement and quality of life, located only 30 min. from Faro Airport. With an award-winning marina, world-class golf courses, stunning beaches, and a wide range of restaurants and entertainment, Vilamoura combines coastal charm with modern sophistication. Ideal for those seeking a life of luxury, security, and comfort, this region offers an unparalleled experience.

- | | | | | |
|--|---|--|--|--|
|  1.2 km
Vilamoura Marina |  2 km
Falésia / Vilamoura Beaches |  3.8/4.3 km
Golf Courses |  1.4 km
5 Star Hotel |  6.9 km
Equestrian Centre |
|  200 m
Nature Reserve |  600 m
Tennis & Padel Academy |  350 m/950 m
Clinic/Hospital |  1.9 km
Vilamoura Casino |  7 km
International School |



VILAMOURA

At the heart of Vilamoura lies its newly expanded international Marina, a vibrant cosmopolitan atmosphere, and a plethora of water sports.

The town presents a rich tapestry of restaurants, and a variety of activities for families, from water parks to boat tours. Sport enthusiasts particularly enjoy the five championship golf courses, tennis and padel courts and the internationally renowned equestrian center.

For those who seek tranquility, Vilamoura offers extensive wellness and spa facilities, a peaceful nature reserve, and breathtaking beaches.



MARINA WITH 825
BERTHS, WATER
SPORTS, SHOPPING,
RESTAURANTS &
BARS.





DEVELOPMENT





With 20 years of international experience, João Vieira has been involved in various projects across Europe, North America, and South America. He has lived and worked as an architect in cities such as New York, Copenhagen, Oslo, Amsterdam, Rotterdam, São Paulo, and Lisbon.

The architect graduated from the Faculty of Architecture at Universidade Lusíada do Porto and was a professor at the Oslo School of Architecture and Design in 2007.

Studio JV is a Portuguese-Brazilian architecture firm led by João Vieira, with a team of 50 architects distributed across three offices in Lisbon, Recife, and Rotterdam, with over 150 projects in development. They emphasize quality design that harmonizes with its surroundings, as well as sustainability, to create resilient structures that endure over time. Sustainability is a fundamental commitment of Studio JV, requiring a comprehensive project sensitivity from structure to finishes, incorporating innovative and technological solutions in all projects.

THE ARCHITECT

JOÃO VIEIRA

“LUMARE IS A TIMELESS, SOPHISTICATED, AND ELEGANT PROJECT THAT EXPLORES THE TWO MOST VALUABLE ELEMENTS OF THE ALGARVE, THE LIGHT AND THE SEA.”



LANDSCAPE ARCHITECTURE

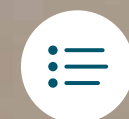
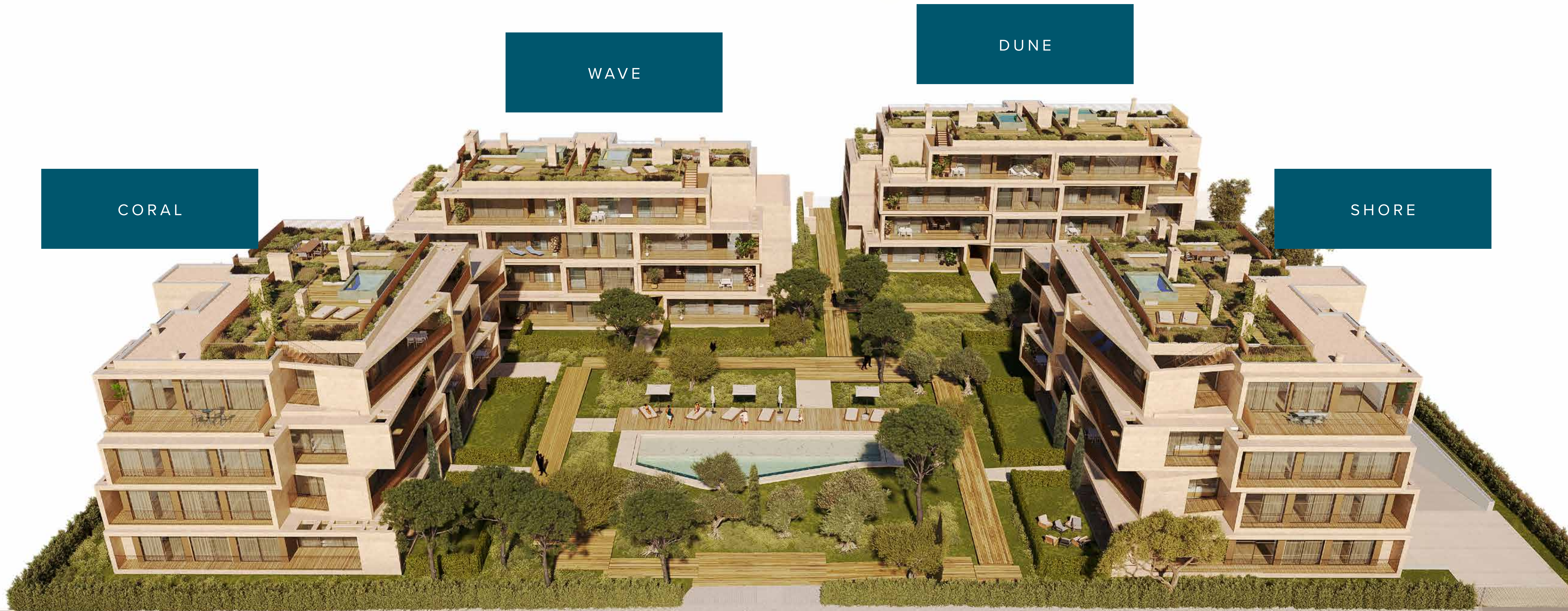
OH!LAND STUDIO

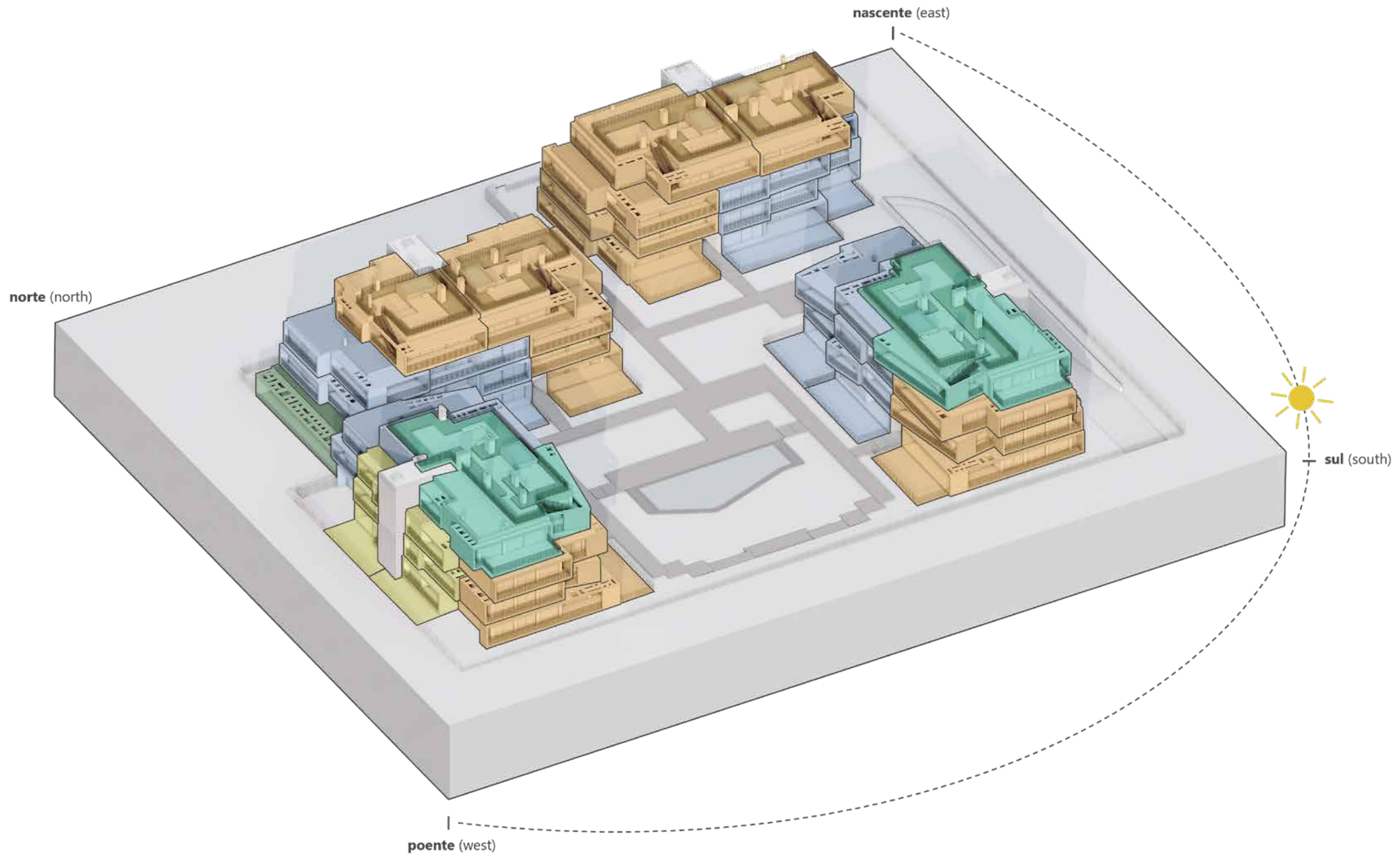
Awarded at both national and European levels, OH!LAND is dedicated to finding innovative ecological solutions for contemporary challenges. Specializing in designing urban landscapes by integrating vegetation, water, soil, light, and rhythm, OH!LAND transforms urban spaces into sustainable and harmonious environments. Their ongoing commitment to ecological innovation ensures projects that not only beautify cities but also promote sustainability and quality of life.



DEVELOPMENT

Lumare consists of four distinct buildings, with apartments ranging from one to four bedrooms.

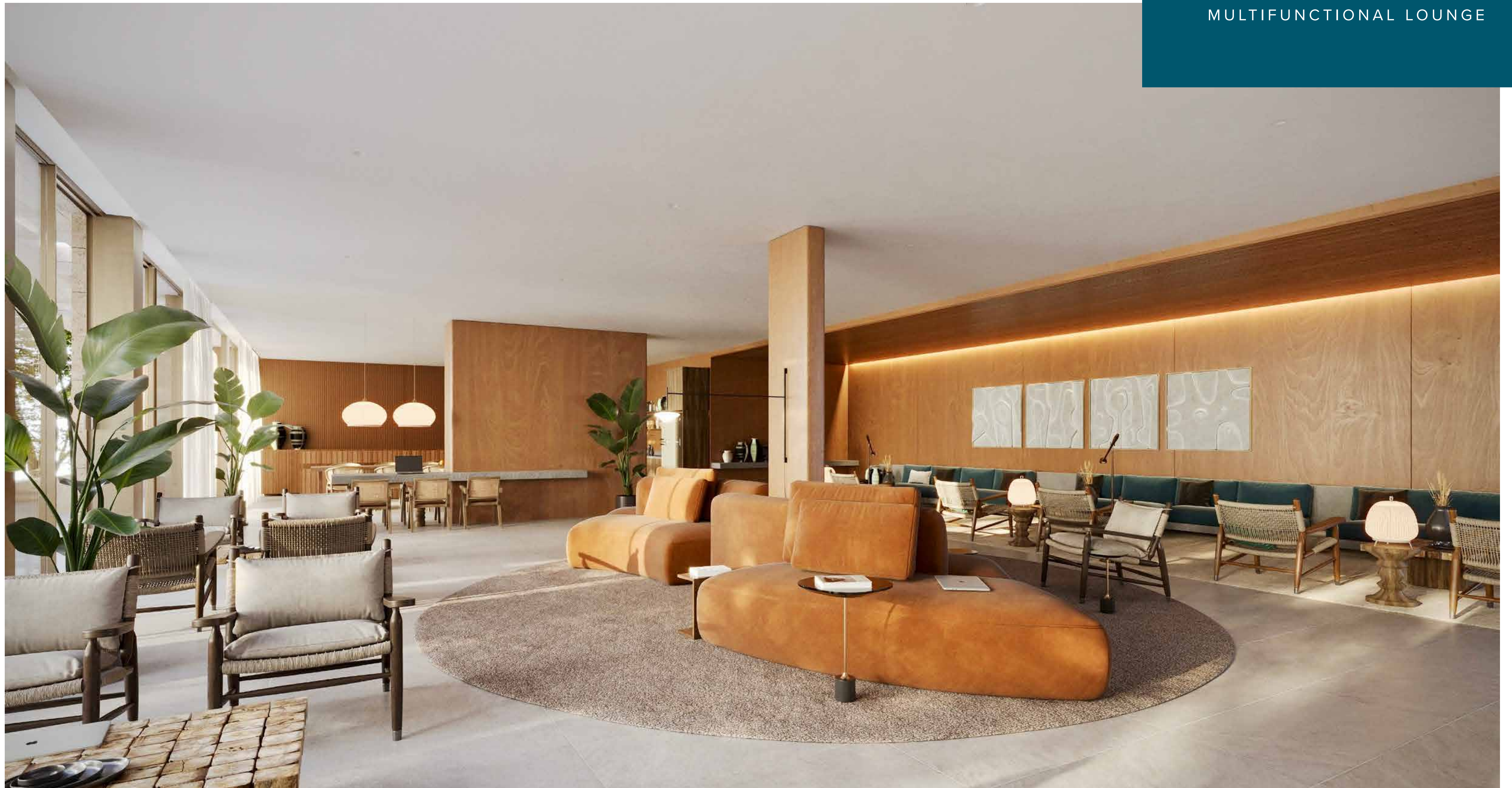




MAIN AREAS

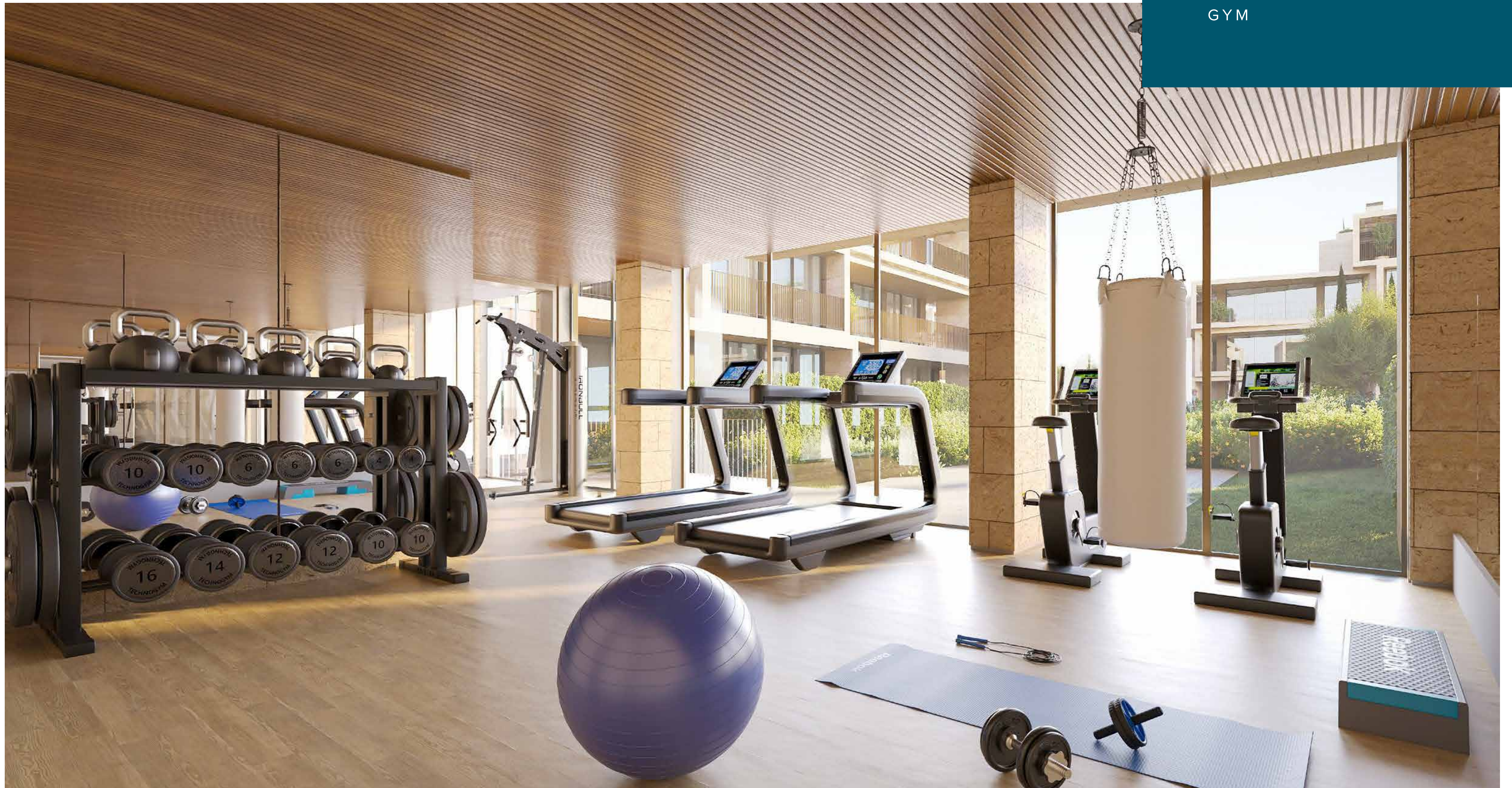
- 1 BED
20 UNITS
 Interior areas up to **69m²**
 Exterior areas up to **99m²**
- 2 BED
24 UNITS
 Interior areas up to **122m²**
 Exterior areas up to **126m²**
- 3 BED
16 UNITS
 Interior areas up to **169m²**
 Exterior areas up to **243m²**
- 4 BED
2 UNITS
 Interior areas up to **195m²**
 Exterior areas up to **358m²**
- C
COMMON AREAS
 Interior areas up to **365m²**
 Exterior areas up to **1,300m²**
 Pool area **118m²**
 Green spaces **2,660m²**
- L
LAND
 Total area **7,794m²**

MULTIFUNCTIONAL LOUNGE



EXTERIOR POOL



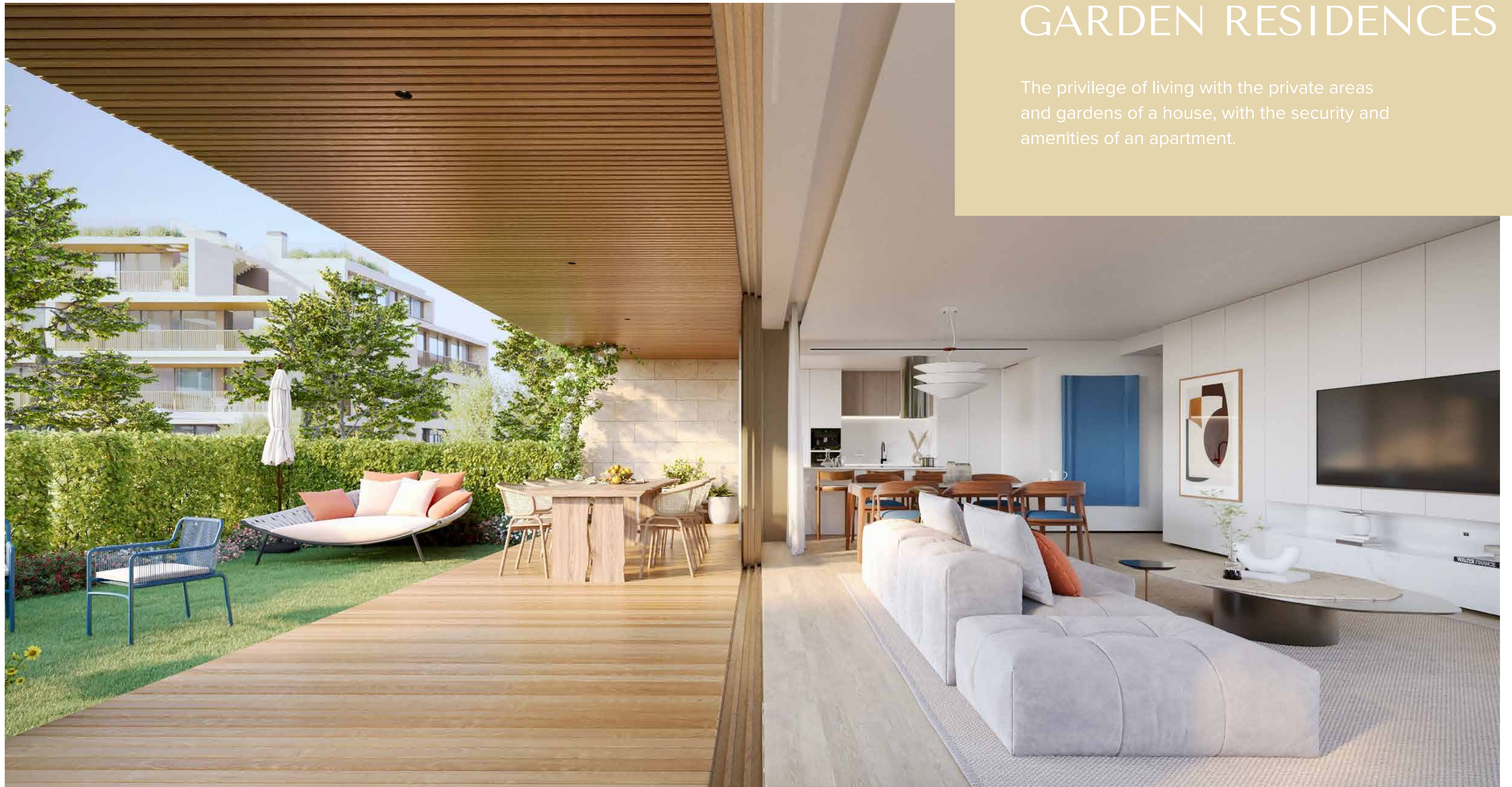


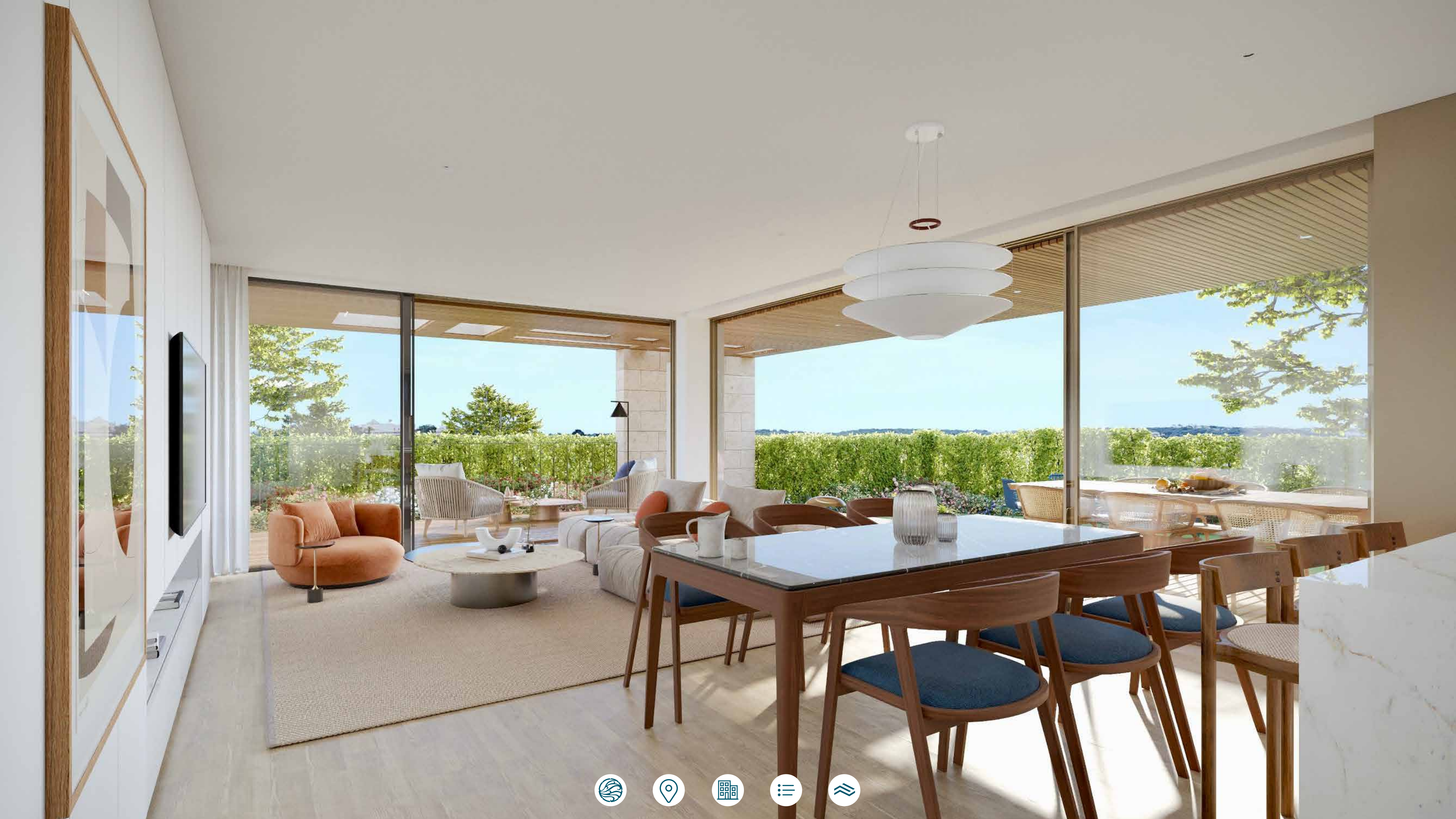
MESSAGE ROOM AND SAUNA



GARDEN RESIDENCES

The privilege of living with the private areas and gardens of a house, with the security and amenities of an apartment.





TYOLOGIES

1 BEDROOM APARTMENT

Interior areas up to 69m²
 Exterior areas up to 99m²
 1 or 2 Parking spaces and storage



TIPOLOGIES

2 BEDROOM APARTMENT

Interior areas up to 122m²
 Exterior areas up to 100m²
 2 Parking spaces and storage



TIPOLOGIES

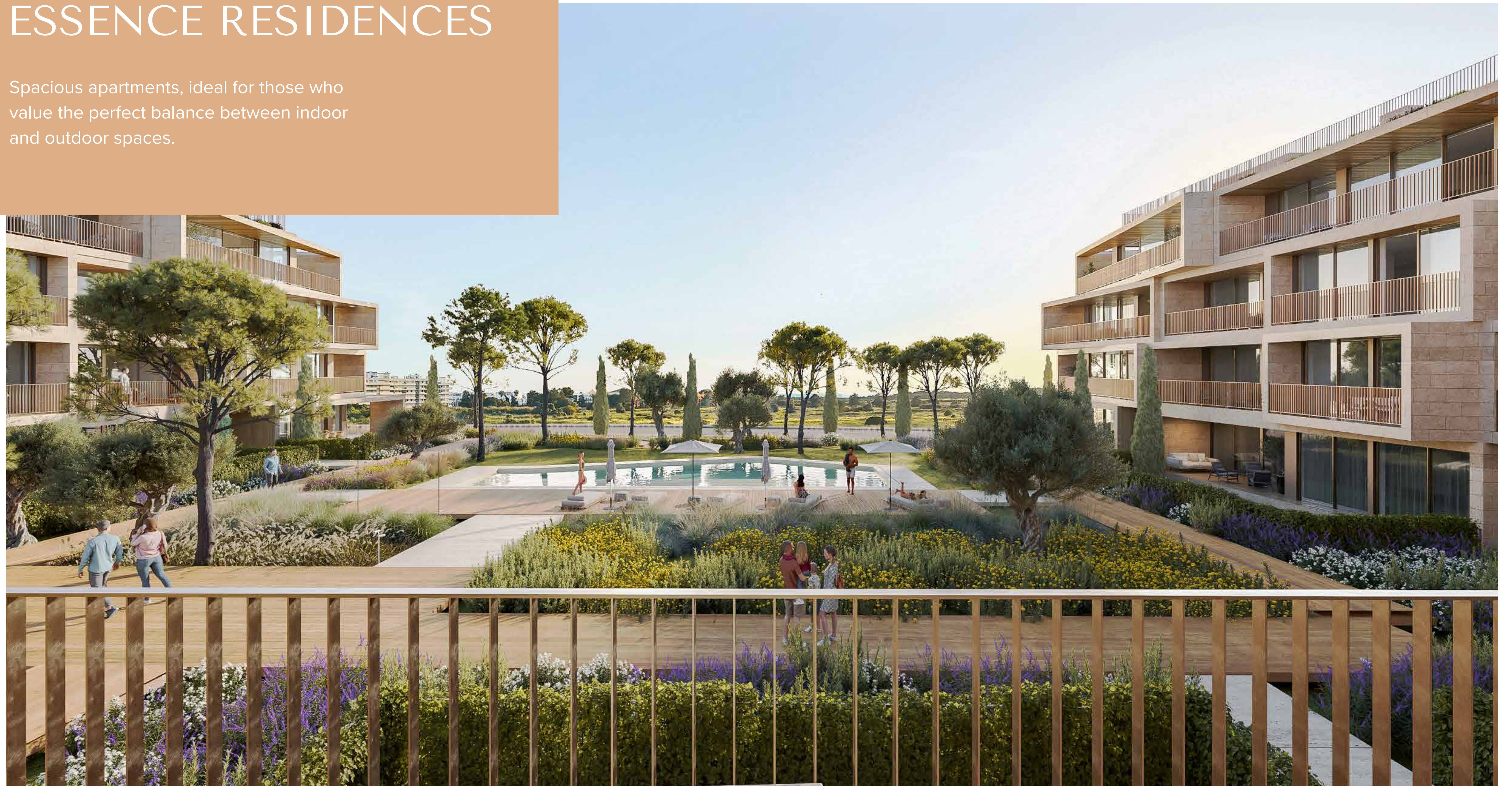
3 BEDROOM APARTMENT

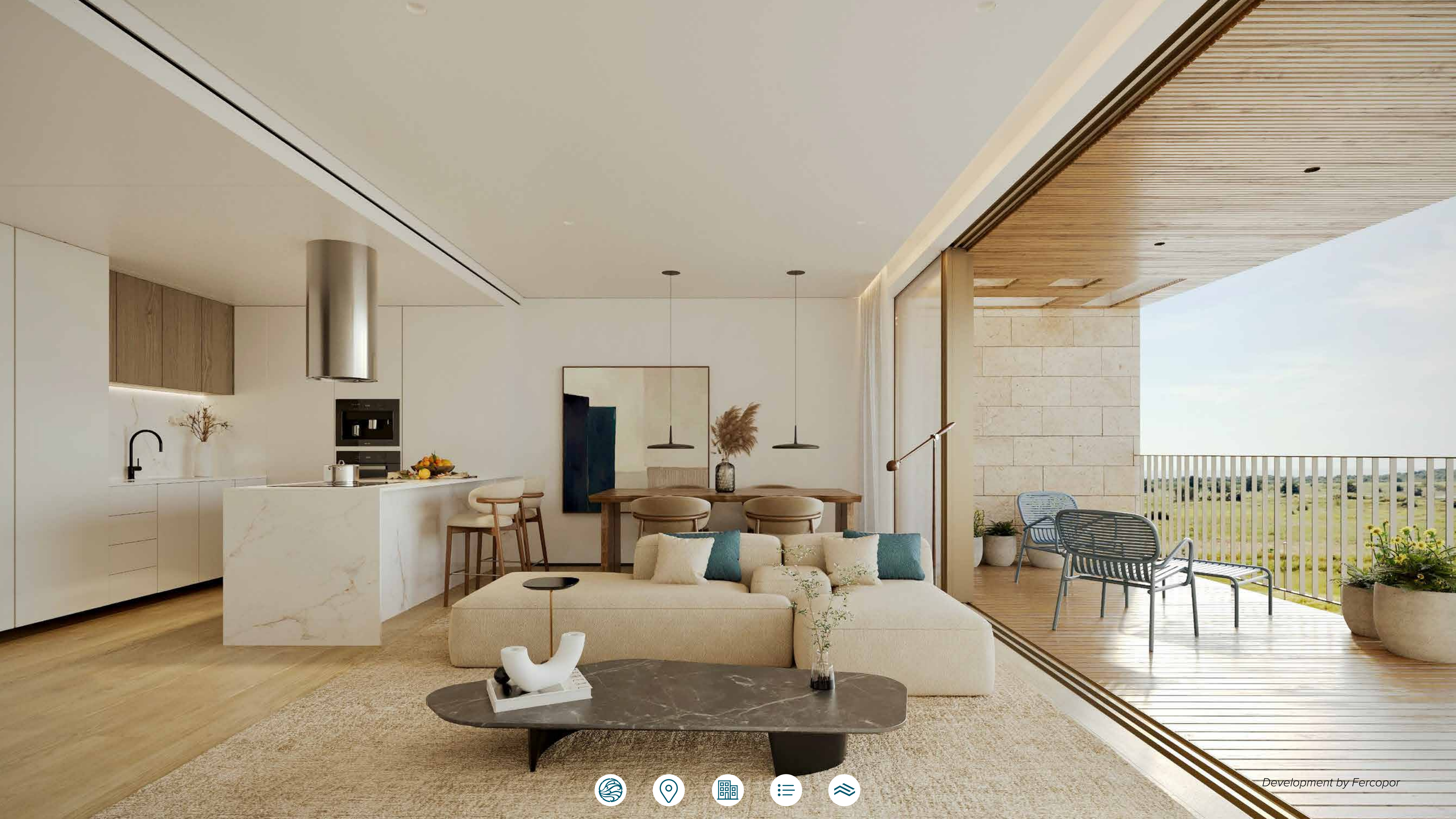
Interior areas up to 151m²
 Exterior areas up to 115m²
 2 Parking spaces and storage



ESSENCE RESIDENCES

Spacious apartments, ideal for those who value the perfect balance between indoor and outdoor spaces.





TYOLOGIES

1 BEDROOM APARTMENT

Interior areas up to 69m²
Exterior areas up to 17m²
1 or 2 Parking spaces and storage



TIPOLOGIES

2 BEDROOM APARTMENT

Interior areas up to 122m²
Exterior areas up to 126m²
2 Parking spaces and storage



TYOLOGIES

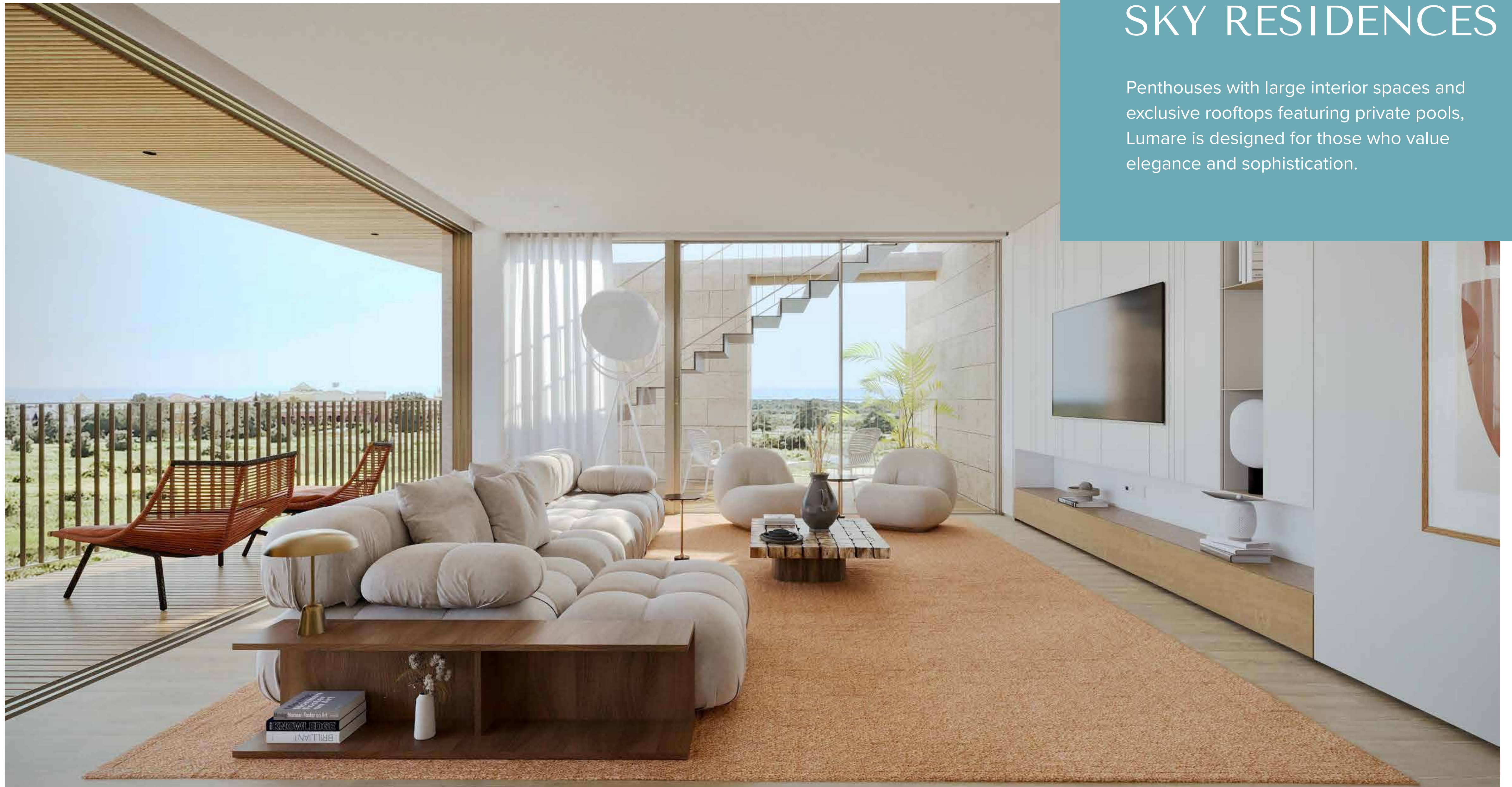
3 BEDROOM APARTMENT

Interior areas up to 156m²
 Exterior areas up to 47m²
 2 Parking spaces and storage

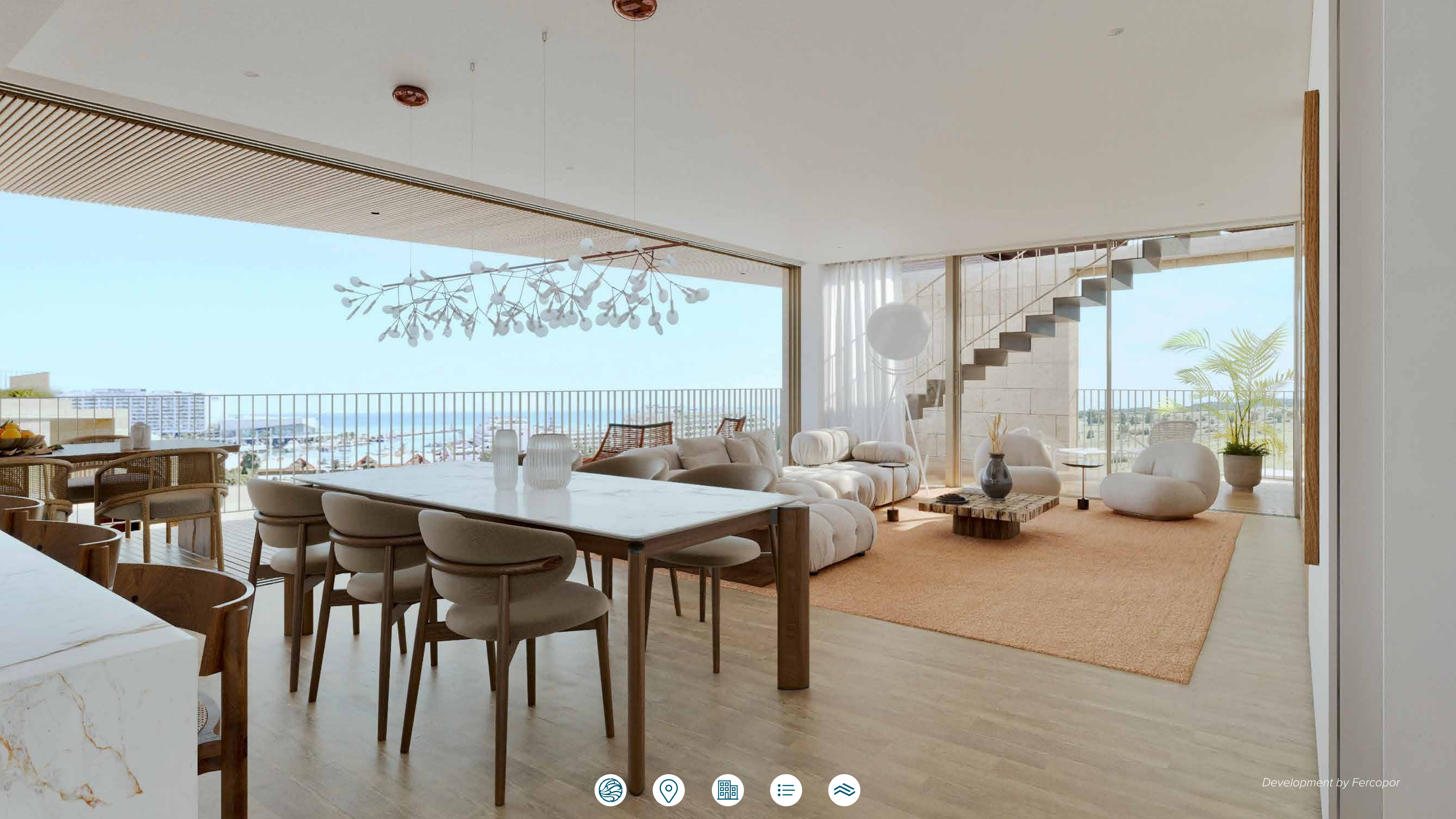


SKY RESIDENCES

Penthouses with large interior spaces and exclusive rooftops featuring private pools, Lumare is designed for those who value elegance and sophistication.







THE SPACIOUS INTERIORS
WITH HIGH QUALITY
FINISHES CREATE A
SOPHISTICATED RETREAT.



TYOLOGIES

3 BEDROOM APARTMENT

Interior areas up to 169m²
 Exterior areas up to 243m²
 Box garage with 2 Parking spaces



TIPOLOGIES

3 BEDROOM APARTMENT ROOF TERRACE

Interior areas up to 169m²
Exterior areas up to 243m²
Box garage with 2 Parking spaces



TIPOLOGIES

4 BEDROOM APARTMENT

Interior areas up to 195m²
Exterior areas up to 358m²
Box garage with 3 Parking spaces



TYPOLOGIES

4 BEDROOM APARTMENT ROOF TERRACE

Interior areas up to 195m²
Exterior areas up to 358m²
Box garage with 3 Parking spaces





FINISHINGS



FINISHINGS

EXTERIOR & COMMON AREAS

EXTERIOR

- Cladding of facades in natural stone, of the Travertine type;
- Aluminium frames with thermal break, minimalist series, equipped with colourless double glazing with solar protection;
- Flooring and ceiling of the balconies in wooden decking

COMMON AREAS

- Cladding in natural stone or composite.

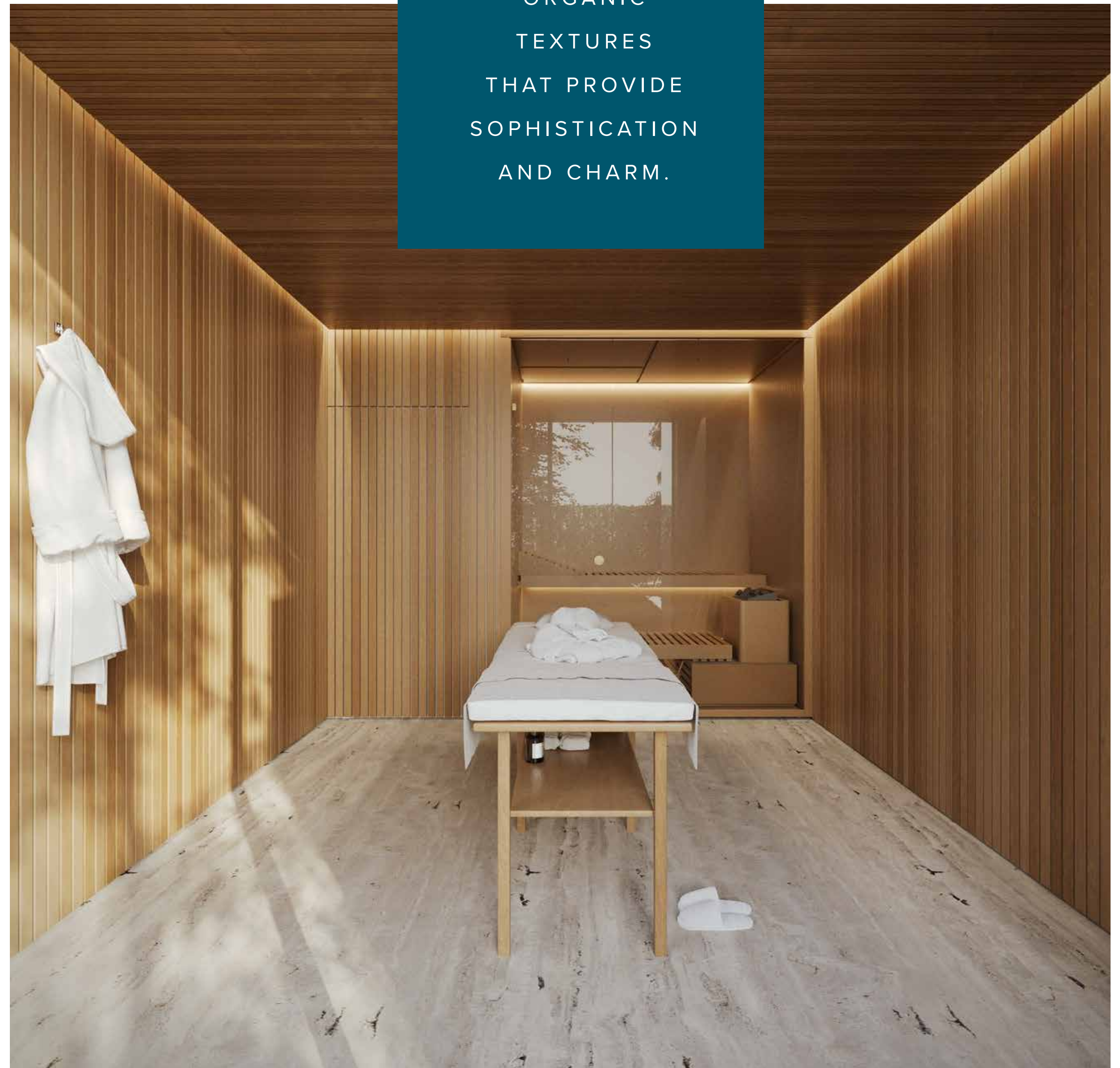
LIFTS

- Lifts by Schmitt, Otis, or equivalent.

GYM

- Light-coloured vinyl flooring;
- Walls in plasterboard, painted in a light colour, with mirrors;
- Ceiling clad with wooden slats;
- Recessed LED lighting.

ORGANIC
TEXTURES
THAT PROVIDE
SOPHISTICATION
AND CHARM.



FINISHINGS

LIVING ROOMS, CORRIDORS, BEDROOMS

- Flooring in oak laminate wood flooring;
- Walls in double plasterboard, with acoustic insulation;
- False ceiling in plasterboard;
- Curtain pelmets with indirect LED lighting;
- Full-height wooden doors, lacquered finish, concealed hinges;
- MDF cabinets, lacquered finish;
- Electric blackout in bedrooms;
- Recessed lighting with LED technology.



NATURAL MATERIALS
THAT CONFER
AUTHENTICITY AND
ELEGANCE.



FINISHINGS

BATHROOM FACILITIES

- Flooring in oak laminate wood flooring (Guest WC);
- Flooring, walls, and countertop in ceramic, NEOLITH type or equivalent (Ensuite bathrooms);
- Suspended sanitary ware;
- Electric underfloor heating in sanitary facilities;
- Waterproof MDF cabinets, with lacquered or veneered finish;
- Recessed lighting with LED technology.



FINISHINGS

KITCHENS

- Waterproof MDF cabinets, with lacquered or veneered finish;
- SIEMENS brand appliances, or equivalent;
- Ceramic countertop and backsplash, NEOLITH type or equivalent;
- Flooring in oak laminate wood flooring;
- Recessed lighting with LED technology.

FINISHINGS

CLIMATE CONTROL, SECURITY & AUTOMATION

CLIMATE CONTROL | DHW

- Ducted air conditioning system;
- Electric underfloor heating in sanitary facilities;
- Heat pump.

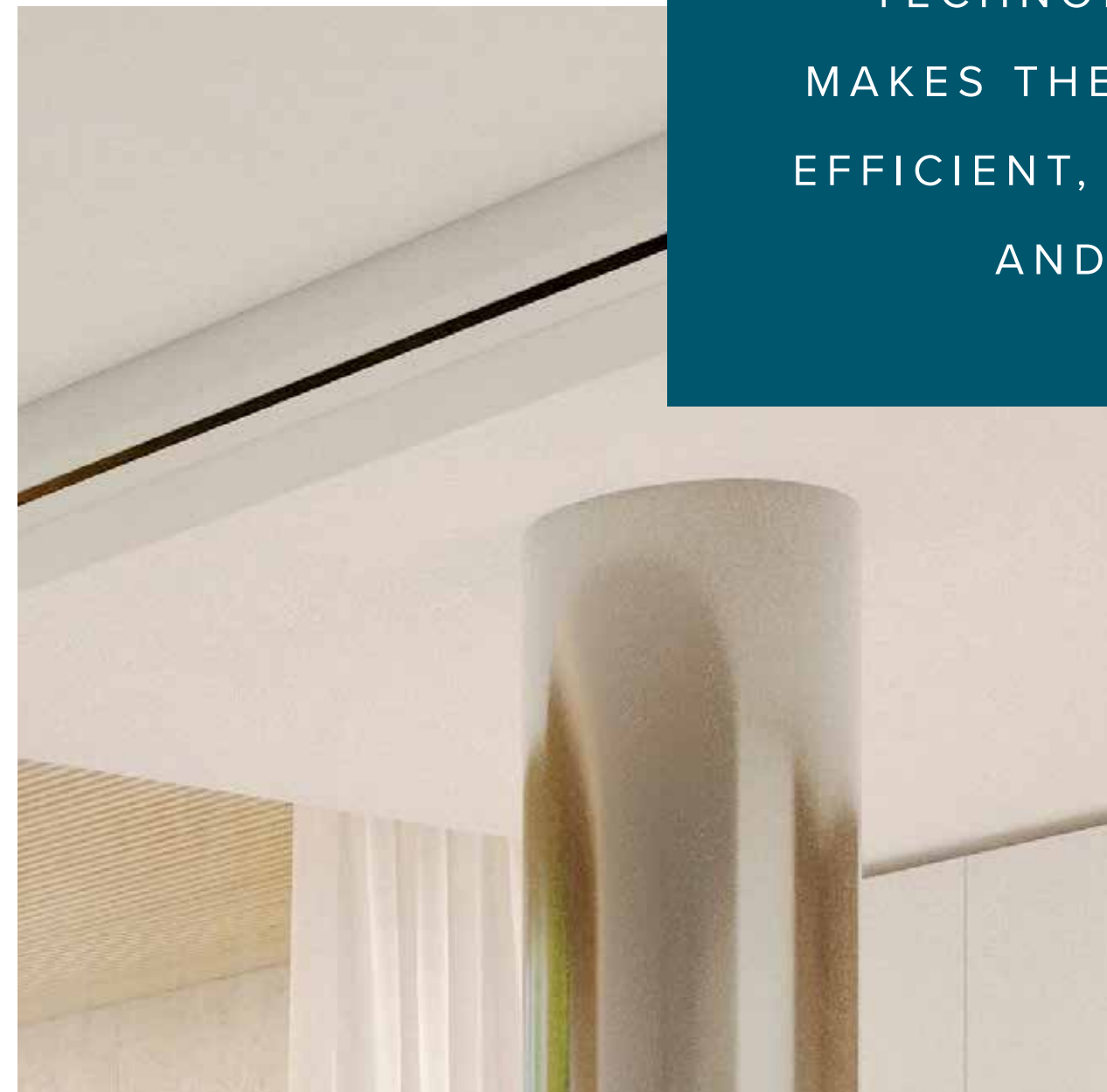
SECURITY

- Video surveillance system in Exterior and Interior Common Areas;
- Automatic intrusion detection system - alarm;
- Automatic flood detection system in Kitchens, Laundries, and Sanitary Facilities;
- Automatic fire detection system in Common Areas and Garage/Parking.

HOME AUTOMATION

- Touch panel for centralized control of alarm, lighting, and climate control.

TECHNOLOGY THAT
MAKES THE HOME MORE
EFFICIENT, SUSTAINABLE
AND SAFE.





LUMARE

VILAMOURA • ALGARVE



Development by Fercopor



DEVELOPER



DEVELOPING EXCELLENCE SINCE 1981

Led by Alberto Ferreira da Costa, Fercopor took its first steps in construction in 1981 and has been redefining the standards of the real estate sector in Portugal. With a consolidated portfolio and several award-winning projects, Fercopor stands out for its unique combination of innovation, quality, and elegance.



300+
PROPERTIES

40+
YEARS EXPERIENCE



Our philosophy is simple: to build spaces that inspire. We use high-quality materials and incorporate top-notch amenities to ensure that each project exceeds our clients' expectations. The result is a portfolio of developments that offer unparalleled comfort in prime locations, providing a superior living experience. More than just a real estate developer, Fercopor is a trusted partner. Our reputation in the Portuguese market is a testament to our ongoing commitment to excellence.



LIVE WITH DISTINCTION

fercopor.pt

  [fercopor.ferreiradacosta](https://www.instagram.com/fercopor.ferreiradacosta)



T. +351 226 065 245

Call to national fixed network

E. geral@fercopor.pt